

CITIZEN CL SERIES PRINTER SET UP

The Citizen CL series set up instructions cover the CL-P521, CL-S521 and CL-S531 thermal ticket printers.

The Citizen CL series thermal ticket printers are usually shipped with the feed sensor set to 'transparent' mode. Tickets with a black index mark on the reverse (i.e. most fan-fold tickets) require the feed sensor to operate in 'reflective' mode. The feed sensor can be changed from 'transparent' to 'reflective' mode by using a combination of the buttons on the front of the printer.

Setting the feed sensor to 'reflective' mode

- Enter the feed sensor adjustment mode by turning the power on while holding down the PAUSE, FEED and STOP buttons. Release the buttons when the CONDITION LED lights up.
- To toggle the feed sensor between 'transparent' and 'reflective' mode, hold down the MODE/REPEAT button and press the STOP button:
 - 'reflective' mode: the buzzer will sound twice and the PRINT LED will flash slowly
 - 'transparent' mode: the buzzer will sound once and the PRINT LED will light up constantly,
- With the feed sensor set to 'reflective' mode, release the MODE/REPEAT button and press the STOP button to exit the sensor adjustment mode.

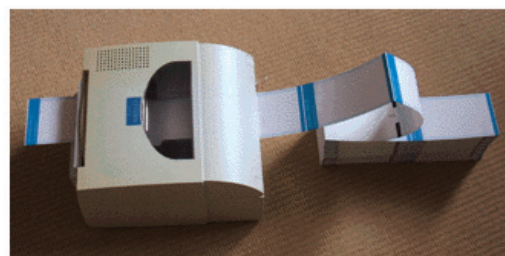
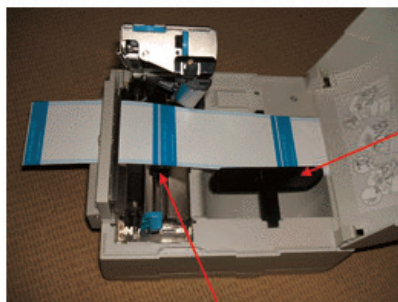
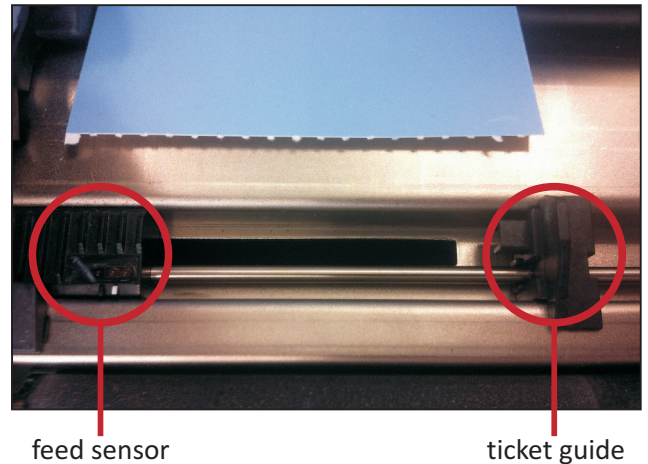
Adjusting the feed sensor

Adjust the position of the feed sensor so that the 'eye' of the sensor is about half way across the black mark on the back of the ticket.

Inserting the fan-fold tickets

Feed the fan-fold tickets through the back of the printer - front side upwards, blank index mark on reverse pointing forwards - and position to the left. Move the ticket guide to meet the tickets. Close the print-assembly. Set both adjustment wheels to '5'.

Switch on and press the feed button. The printer should feed just one ticket. If the printer feeds several tickets, either the feed sensor is not positioned correctly (missing the black index mark on the back of the ticket) or the feed sensor is not set to 'reflective' mode.



CITIZEN CL SERIES PRINTER SET UP

Install the Citizen CLP-521 / CLS-521 Windows printer driver before following the configuration steps below...

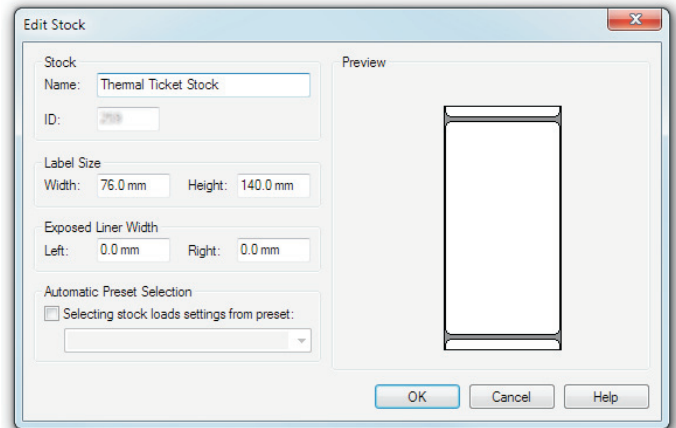
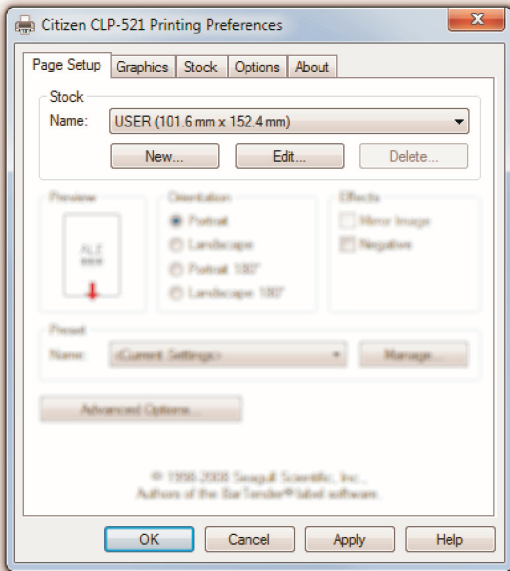
(Please note: the stock dimensions detailed below relate to unbranded thermal ticket stock supplied by TicketSource. If you are using your own thermal ticket stock, you will need to measure and provide its dimensions accordingly)

Windows XP:

- Open Printers and Faxes from the Start Menu,
- Click the printer you want to change,
- On the File menu, click Printing Preferences

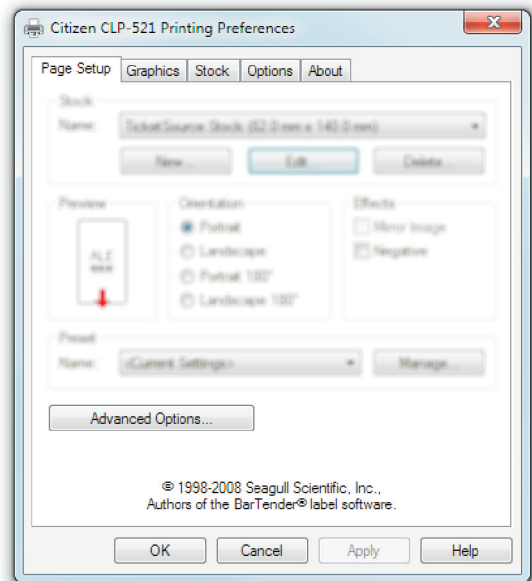
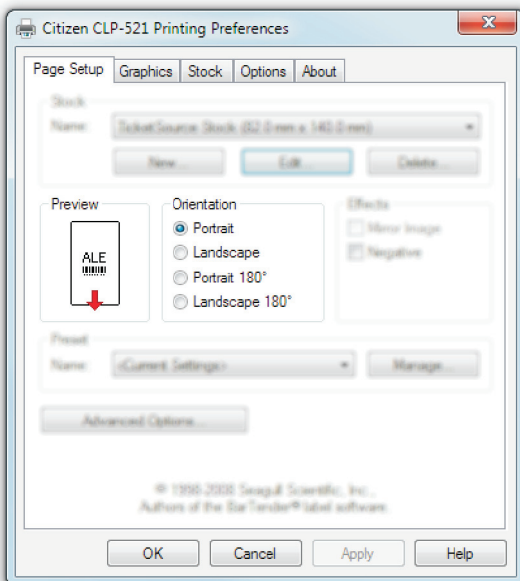
Windows Vista/7:

- Open Devices and Printers from the Start Menu,
- Right click the printer you want to change,
- On the pop-up menu, click Printing Preferences



Step 1: Create a new stock size for the printer by clicking the “New...” button in the Stock section

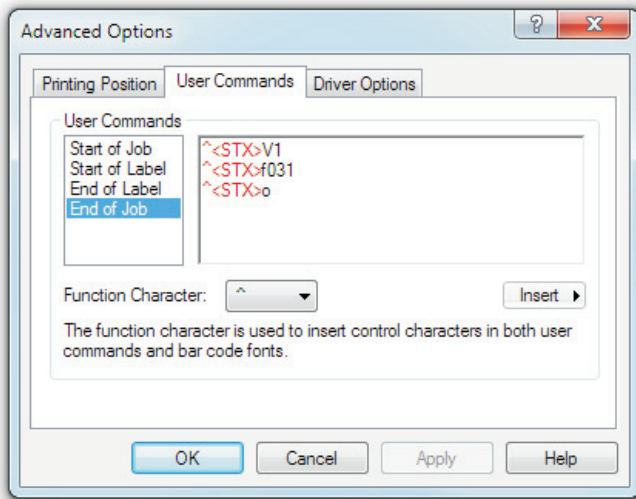
Step 2 - setting the stock dimensions: Provide a descriptive name for the stock, enter the stock dimensions 76.00mm width x 140.00mm height, exposed liner width left 0.0mm and right 0.0mm, click ‘OK’ and click ‘Apply’



Step 3 - setting the stock orientation: Ensure the Orientation is set to “Portrait” and click “Apply” (if applicable)

Step 4 - setting the ticket cutter: Click “Advanced Options...”

CITIZEN CL SERIES PRINTER SET UP



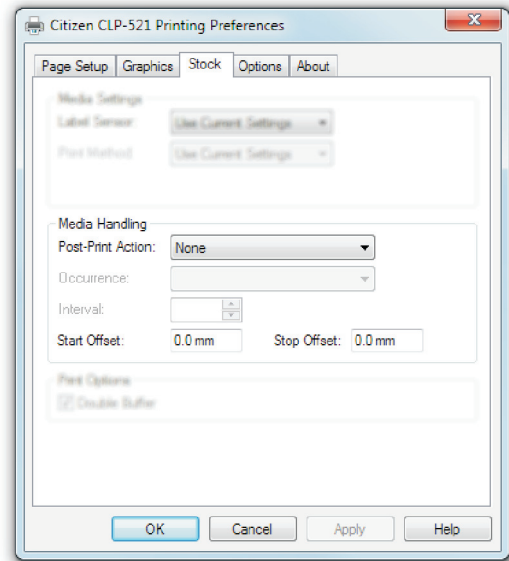
Step 5 - setting the ticket cutter: Click the "User Commands" tab and select the "End of Job" option. In the space provided, enter the following commands:

^<STX>V1

^<STX>f031

^<STX>o

Click "Apply" and click "OK"



Step 6 (applies to newer versions of the Citizen printer driver only) Click the "Stock" tab and set the Post-Print Action to "None". Click "Apply" and click "OK" to finish.

Please note: A reboot of your computer will be required for some of the settings to take effect.